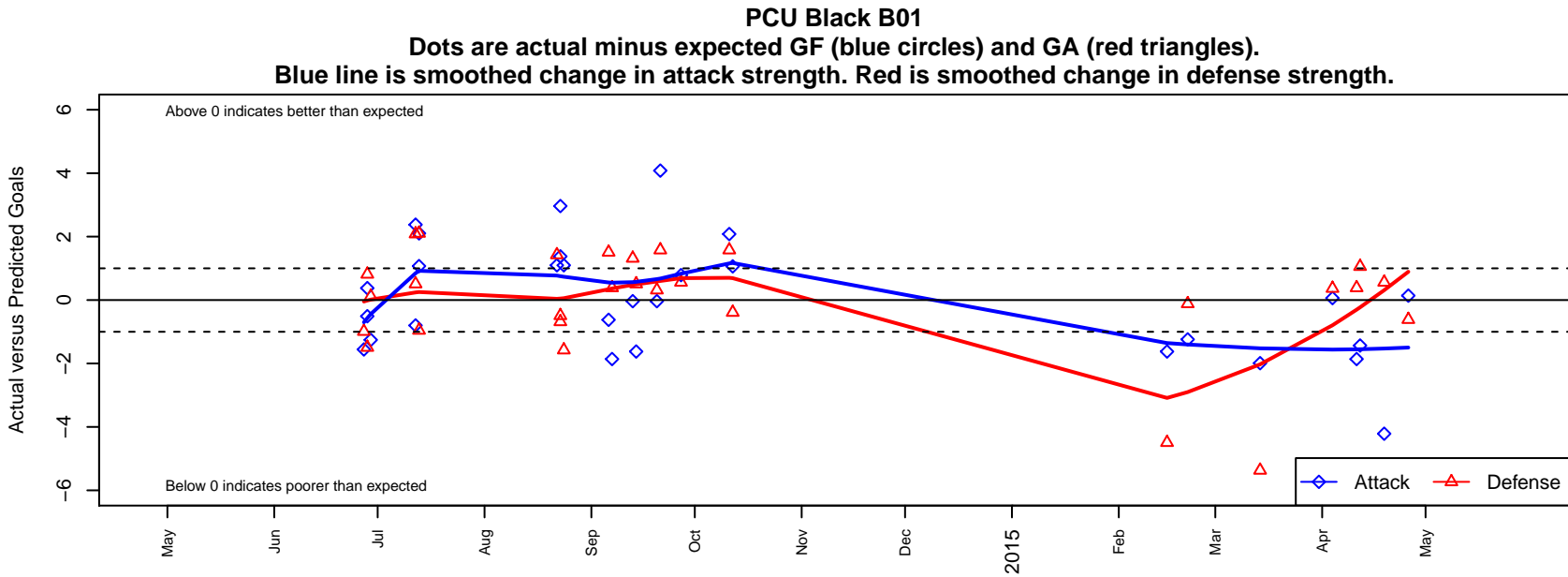


PCU Black B01

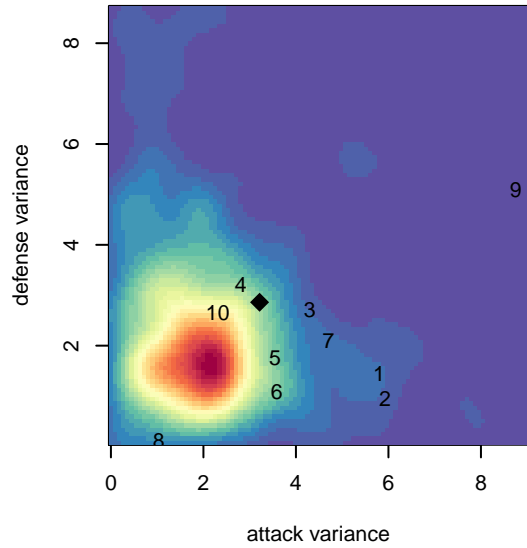
Portland City United SC
 Portland, OR
 B01 total strength=468
 attack=0.4 defense=0.25
 fall league = PTT-B B01 Timbers Div 2
 spr league = Spr OYS B01 Div 2

alt names used:
 PCU 01B – Black
 PCU 01B – BLACK
 PCU 01B Black
 PCU 01B – Black
 PCU 01B Black

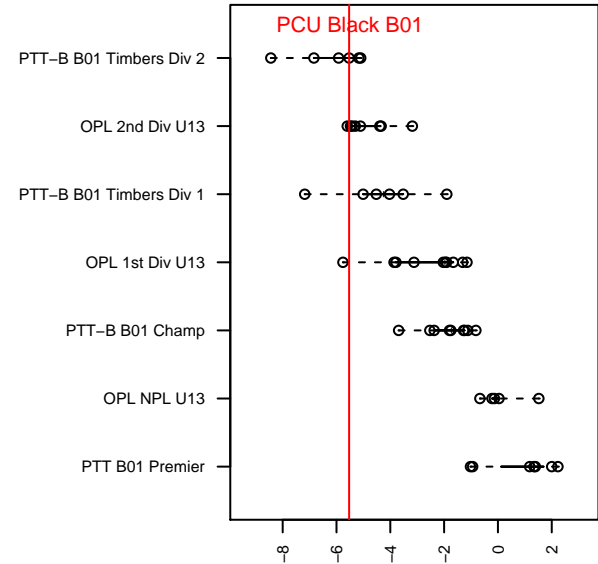
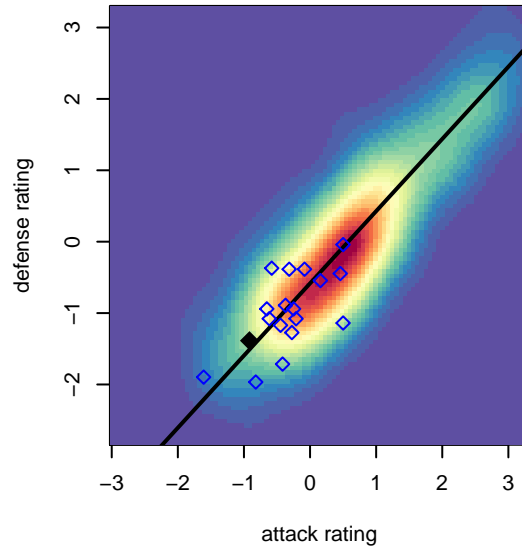
Venues played:
 2013 Spr OYS B01 Spring White
 2014 Clash At the Border Gold/Silver/Bronze U
 2014 PCU Summer Classic U13 Silver
 2014 Summer Slam Silver U13
 2014 PTT-B B01 Timbers Div 2
 2014 Spr OYS B01 Division 2



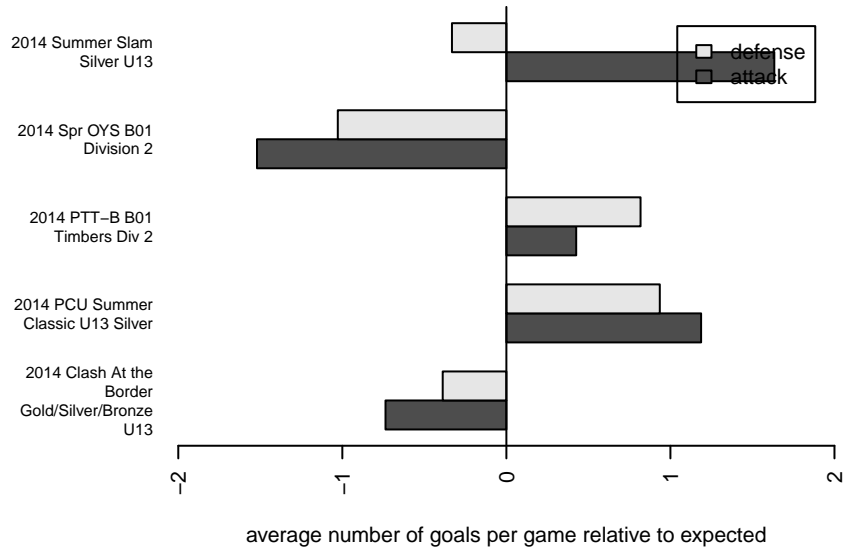
**attack and defense variance (black dot)
relative to other teams
and top 10 in region**



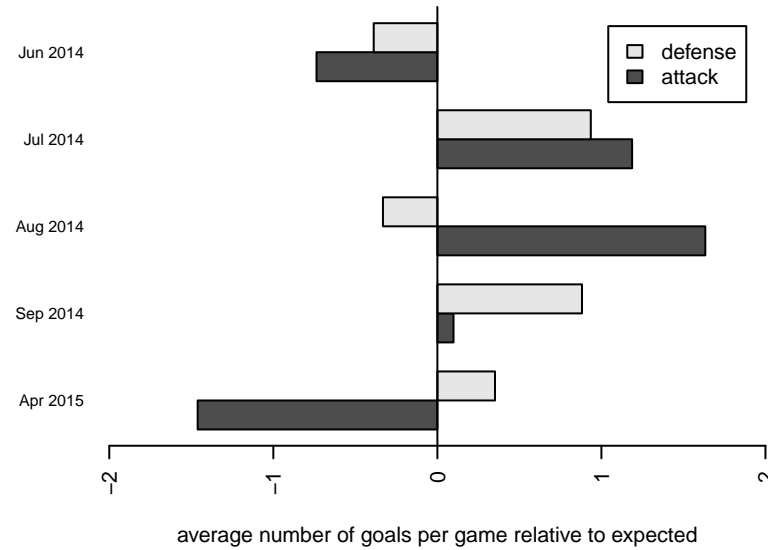
**attack and defense rating
relative to others at age
and all opponents in last 13 months**



Performance relative to 13 month average



Performance relative to 13 month average



date	home		away		venue	pred.home	pred.away
2015-04-26	Westside Timbers Mundial B01	3	PCU Black B01	2	2014 Spr OYS B01 Division 2	2.39	1.86
2015-04-19	CSC Storm White B01	0	PCU Black B01	0	2014 Spr OYS B01 Division 2	0.56	4.21
2015-04-12	Westside Timbers Copa TS B01	1	PCU Black B01	0	2014 Spr OYS B01 Division 2	2.06	1.43
2015-04-11	PCU Black B01	0	Westside Timbers Mundial B01	2	2014 Spr OYS B01 Division 2	1.86	2.39
2015-04-04	PCU Black B01	1	BSC Portland Gold-Tiempo B01	3	2014 Spr OYS B01 Division 2	0.94	3.37
2015-03-14	PCU Black B01	0	BSC Newberg Vapor B01	11	2014 Spr OYS B01 Division 2	1.99	5.63
2015-02-21	ETFC Valencia Red B01	2	PCU Black B01	0	2014 Spr OYS B01 Division 2	1.88	1.24
2015-02-15	PCU Black B01	0	Washington Timbers Crimson B01	7	2014 Spr OYS B01 Division 2	1.62	2.51
2014-10-12	BSC Portland Vapor B01	3	PCU Black B01	3	2014 PTT-B B01 Timbers Div 2	2.61	1.94
2014-10-11	PCU Black B01	6	PYSA Thunderbolts B01	0	2014 PTT-B B01 Timbers Div 2	3.92	1.58
2014-09-27	PCU Black B01	5	CSC Storm White B01	0	2014 PTT-B B01 Timbers Div 2	4.21	0.56
2014-09-21	PYSA Thunderbolts B01	0	PCU Black B01	8	2014 PTT-B B01 Timbers Div 2	1.58	3.92
2014-09-20	PCU Black B01	3	LCYSA Osprey B01	2	2014 PTT-B B01 Timbers Div 2	3.04	2.32
2014-09-14	PCU Black B01	0	Washington Timbers Crimson B01	2	2014 PTT-B B01 Timbers Div 2	1.62	2.51
2014-09-13	LCYSA Osprey B01	1	PCU Black B01	3	2014 PTT-B B01 Timbers Div 2	2.32	3.04
2014-09-07	PCU Black B01	0	Westside Timbers Mundial B01	2	2014 PTT-B B01 Timbers Div 2	1.86	2.39
2014-09-06	Washington Timbers Crimson B01	1	PCU Black B01	1	2014 PTT-B B01 Timbers Div 2	2.51	1.62
2014-08-24	Albany FC Heat B01	7	PCU Black B01	2	2014 Summer Slam Silver U13	5.42	0.90
2014-08-23	LCYSA Osprey B01	3	PCU Black B01	6	2014 Summer Slam Silver U13	2.32	3.04
2014-08-23	Washington Timbers Crimson B01	3	PCU Black B01	3	2014 Summer Slam Silver U13	2.51	1.62
2014-08-22	PCU Black B01	2	Albany FC Heat B01	4	2014 Summer Slam Silver U13	0.90	5.42
2014-07-13	PCU Black B01	2	THUSC Uranium B01	1	2014 PCU Summer Classic U13 Silver	0.93	3.10
2014-07-13	Thelo Cosmos White B01	3	PCU Black B01	4	2014 PCU Summer Classic U13 Silver	2.05	1.90
2014-07-12	PCU Black B01	4	Washington Timbers Crimson B01	2	2014 PCU Summer Classic U13 Silver	1.62	2.51
2014-07-12	NEU Lazio Blue B01	2	PCU Black B01	0	2014 PCU Summer Classic U13 Silver	4.08	0.80
2014-06-29	NWN Blue B01	2	PCU Black B01	0	2014 Clash At the Border Gold/Silver/Bro	2.12	1.26
2014-06-28	PCU Black B01	0	Washington Timbers Green B01	6	2014 Clash At the Border Gold/Silver/Bro	0.51	6.81
2014-06-28	PCU Black B01	2	Washington Timbers Crimson B01	4	2014 Clash At the Border Gold/Silver/Bro	1.62	2.51

date	home		away		venue	pred.home	pred.away
2014-06-27	FSC Rangers B01	4	PCU Black B01	0	2014 Clash At the Border Gold/Silver/Bro	3.01	1.56
2014-04-26	PCU Black B01	3	Westside Timbers Mundial B01	0	2013 Spr OYS B01 Spring White	NA	NA